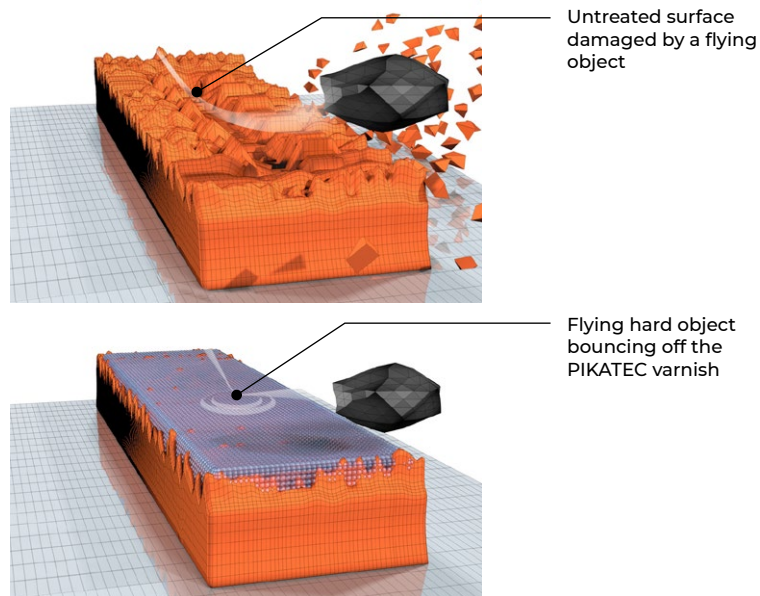
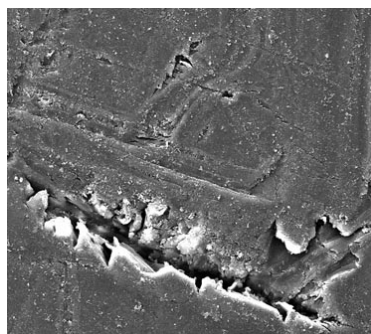


# PIKATEC Car

## Nano treatment protecting automobile surface areas



Crack in the paint invisible to the naked eye



10µm

■ No matter how smooth the windshield surface may appear, its structure is actually pretty coarse. And depositing in its recesses are dirt, chemicals and grease that are rather difficult to remove. If the surface is levelled out, the dirt has nowhere to deposit, the car is a lot less prone to getting dirty and its maintenance a lot easier. ■

The mix of a unique resin, special additives, and nanoparticles of oxides of silicium, zircon, and titanium create an invisible shield on the surface defending it against damage and dirt. It protects the body paint coat, the wheels, the windows, and the interior of the vehicle. ■ The hard ceramic PIKATEC Car coating is resistant to tem-

peratures exceeding 700 °C. ■ The varnish adds high shine and depth to the paint coat and being hard, it also protects the paint coat from scratches, salts, asphalt, pollen, tree resin, insects, and bird excrements. ■ Sealing also protects the surface from ageing and fading as the nano layer acts as a barrier against UV radiation.

